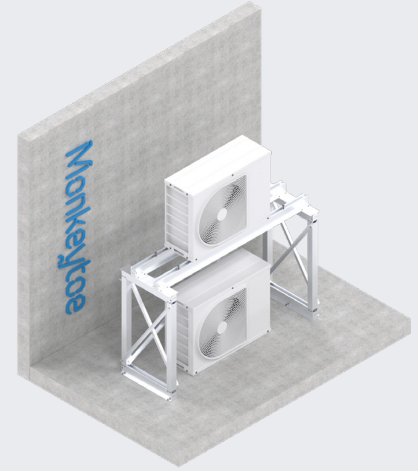


CONDENSER MOUNT

Monkeytoe Stacked Condenser Mounts



PRODUCT DESCRIPTION

Adjustable aluminium stacked mounting system for HVAC units/packs.

TYPICAL USES / APPLICATIONS

- Mounting of A/C units on top of each other to save space.
- Raised mounting of pipework, cable trays, A/C and refrigeration Plant.
- Can be used as a base for raised walkway access systems.
- Roof top mounting for air conditioning condenser units

CHARACTERISTICS / ADVANTAGES

- Modular, easy and fast installation.
- Heavy duty – 3 sizes with units up to 120kg, 150kg and 300kg
- Robust – High Tensile, marine grade Aluminum.
- Suitable for a wide variety of raised mounting applications.
- Can be fixed to different ground surfaces in a variety of ways.

TECHNICAL DATA / MATERIALS

- High Tensile, marine grade Aluminum.
- Fixings: Dacromet coated stainless steel tek screws

TESTS

APPROVALS / STANDARDS

- Structural design action B1 & B2
- AS/NZS 1170 Standards Australia / New Zealand (Relevant parts)
- PS1 & design certificates for all regions in Australia and NZ
- AS/NZS 1866
- AS/NZS 1664

WARRANTY

- 25 years materials
- In accordance with the relevant PS1 or Design certificate for the region in which it is installed

MAINTENANCE

- It is recommended that Condenser Mounts are included in the standard 'building warrant of fitness' inspections.
- All damage or loose fixings to be reported immediately to asset manager or building owner for correction.

WIND REGIONS NZ1-4 & A0-5:

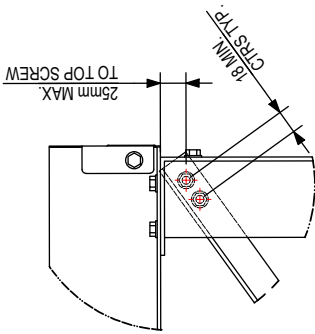
SPLIT STYLE UNITS:

MAX. UNIT HEIGHT = 1100mm
MAX. UNIT WIDTH = 1200mm

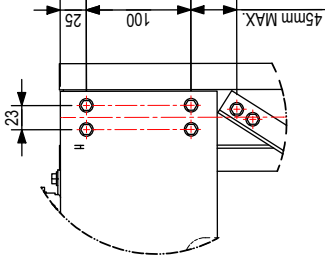
WIND REGIONS B1 & B2:

SPLIT STYLE UNITS:
MAX. UNIT HEIGHT = 1000mm
MAX. UNIT WIDTH = 1100mm

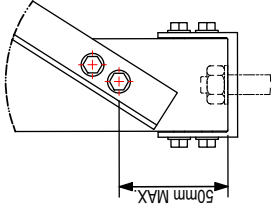
REFER TO UNIT MANUFACTURERS BRACING REQUIREMENTS FOR UNITS.



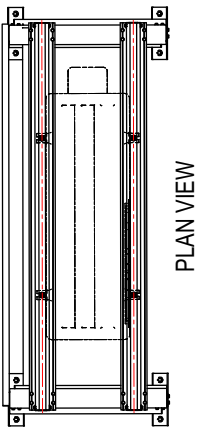
DETAIL 1
1:4



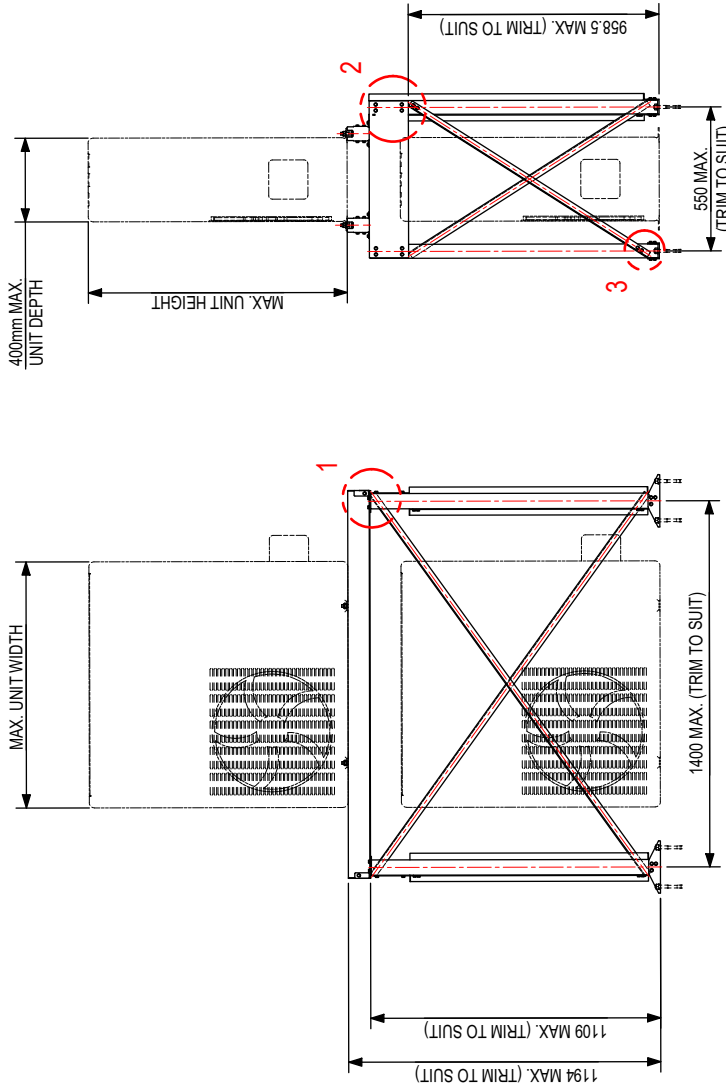
DETAIL 2
1:5



DETAIL 3
1:3

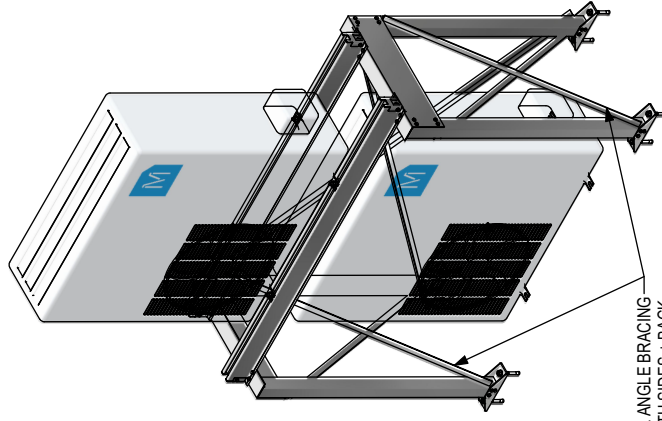


PLAN VIEW



FRONT VIEW

SIDE VIEW



25x3mm EQUAL ANGLE BRACING
TO BOTH SIDES + BACK.
CONNECT TO TOP OF LEGS +
50mm MAX. FROM BASE CHANNEL

Monkeytoe

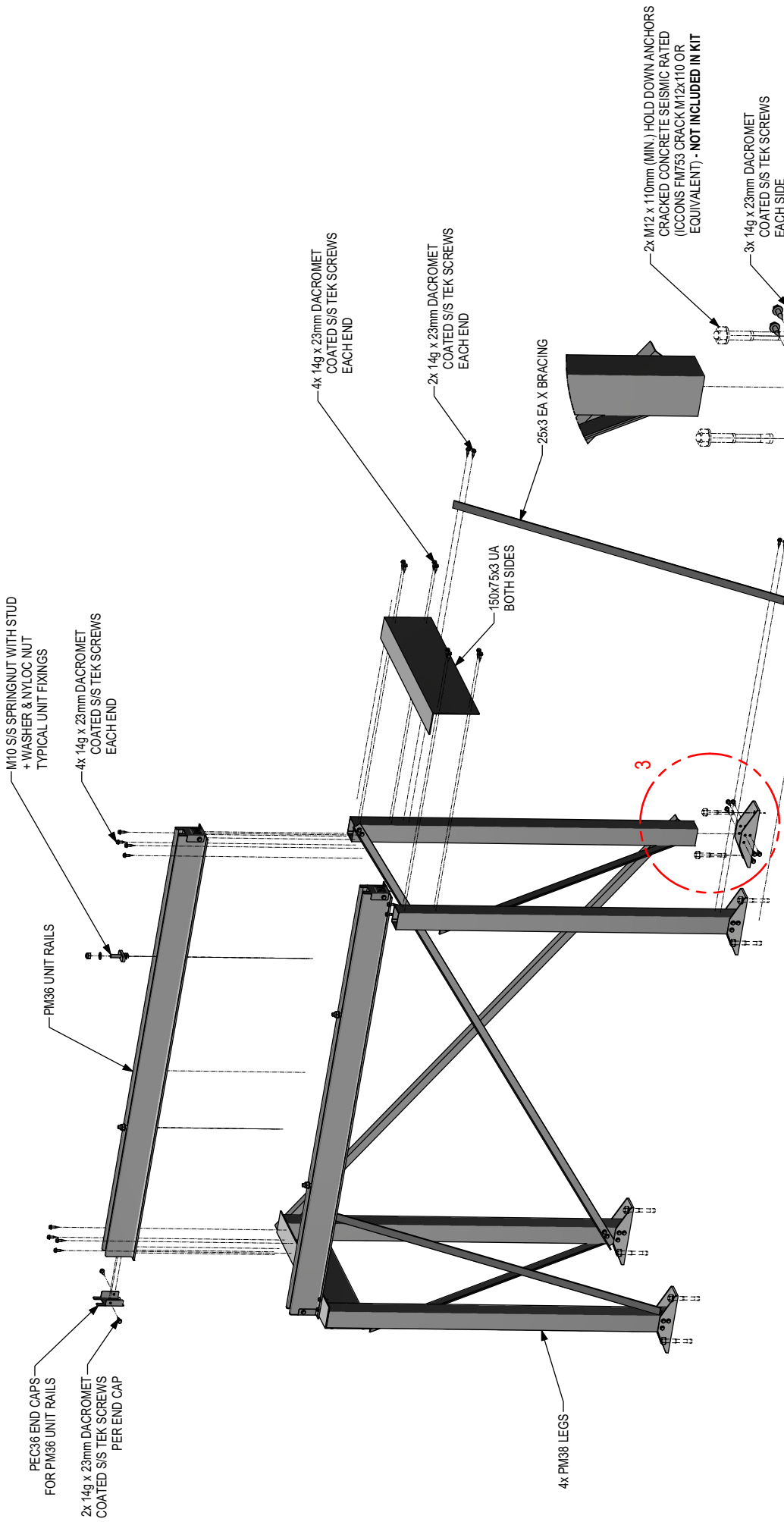
EVERYTHING BETTER
AUSTRALIA
NEW ZEALAND

0800 658 637 - www.monkeytoe.co.nz | 1800 953 047 - www.monkeytoe.com.au

DESIGN CRITERIA: AUSTRALIA
IMPORTANCE LEVEL = 2
SOIL CLASS = C (Worst Case)
SEISMIC HAZARD FACTOR (Z) ≤ 0.15
HORIZONTAL SEISMIC ACCELERATION ≤ 0.5g
WIND REGIONS: A & B
WIND EXPOSURE: UP TO 15m ABOVE GROUND

DESIGN CRITERIA: NEW ZEALAND
IMPORTANCE LEVEL = 2
SOIL CLASS = C (Worst Case)
SEISMIC HAZARD FACTOR (Z) ≤ 0.42
HORIZONTAL SEISMIC ACCELERATION ≤ 22g
WIND REGIONS: NZ1-4
WIND EXPOSURE: UP TO 15m ABOVE GROUND

120kg STACKED CONDENSER MOUNT	
MONKEYTOE GROUP	11/04/2024
DWG No: CS025-1-CSS-01	A3
SHEET 1 OF 2	SCALE: NTS
DO NOT SCALE	REV: 1
DIMENSIONS IN MILLIMETERS	



PART EXPLODED VIEW

DETAIL 3
1:5

120kg STACKED CONDENSER MOUNT			
MONKEYTOE GROUP			
DWG No: CS025.1-CSS-01	11/04/2024		
SHEET 2 OF 2		A3	
SCALE: NTS		REV:1	
DO NOT SCALE		DIMENSIONS IN MILLIMETERS	



EVERYTHING BETTER
AUSTRALIA

NEW ZEALAND | 0800 658 637 - www.monkeytoe.co.nz | 1800 953 047 - www.monkeytoe.com.au

WIND REGIONS NZ1-4 & A0-5:

SPLIT STYLE UNITS:

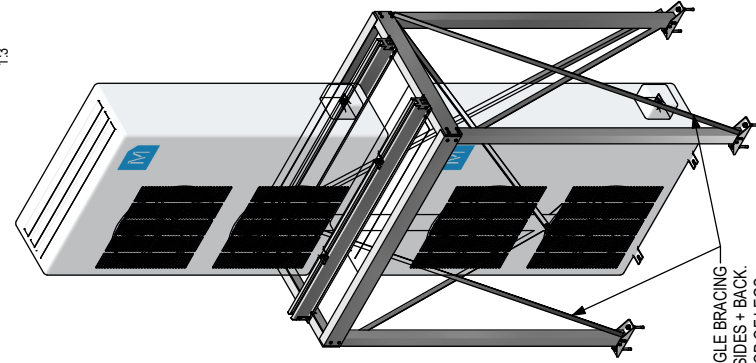
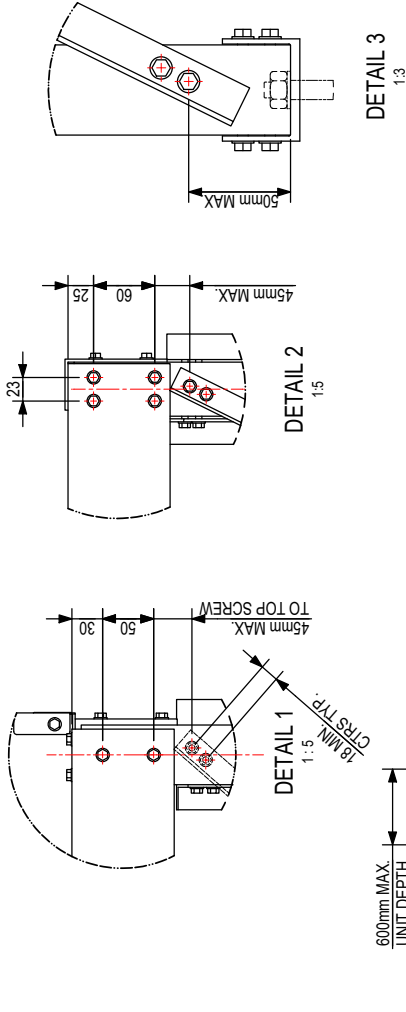
- MAX. UNBRACED UNIT HEIGHT = 1250mm*
- MAX. BRACED UNIT HEIGHT = 1430mm
- MAX. UNIT WIDTH = 1100mm @ 1430mm TALL

WIND REGIONS B1 & B2:

SPLIT STYLE UNITS:

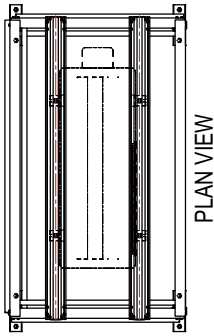
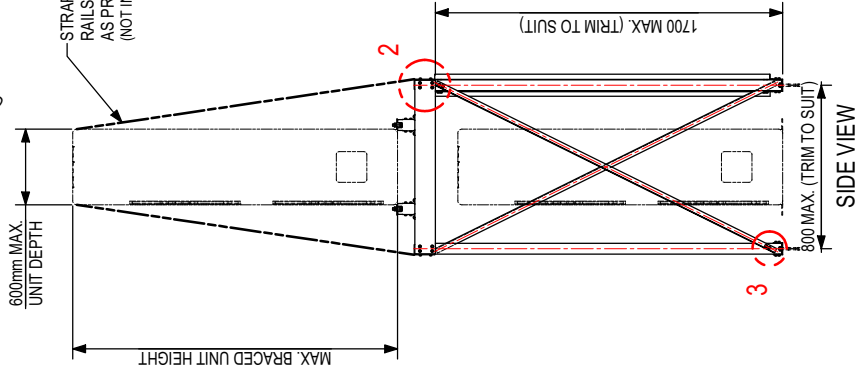
- MAX. UNBRACED UNIT HEIGHT = 1000mm*
- MAX. BRACED UNIT HEIGHT = 1430mm
- MAX. UNIT WIDTH = 1100mm @ 1430mm TALL

* REFER TO UNIT MANUFACTURERS BRACING REQUIREMENTS FOR UNITS LESS THAN SPECIFIED HEIGHT.

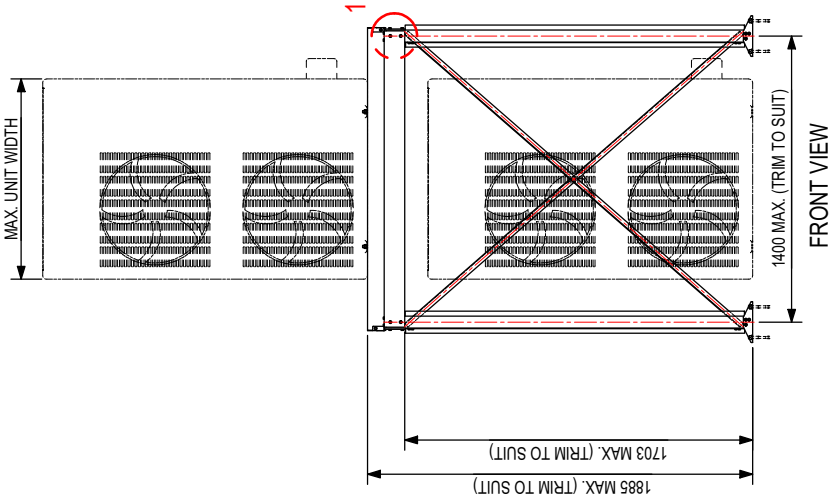


25x3mm EQUAL ANGLE BRACING TO BOTH SIDES + BACK. CONNECT TO TOP OF LEGS + 50mm MAX. FROM BASE CHANNEL

STRAP BRACING FIXED TO RAILS, BOTH SIDES, AS CLOSE AS PRACTICAL TO LEGS. (NOT INCLUDED IN KIT)



PLAN VIEW



FRONT VIEW

SIDE VIEW

DESIGN CRITERIA: AUSTRALIA

- IMPORTANCE LEVEL = 2
- SOIL CLASS = C (Worst Case)
- SEISMIC HAZARD FACTOR (Z) ≤ 0.15
- HORIZONTAL SEISMIC ACCELERATION ≤ 0.5g
- WIND REGIONS: A & B
- WIND EXPOSURE: UP TO 15m ABOVE GROUND

DESIGN CRITERIA: NEW ZEALAND

- IMPORTANCE LEVEL = 2
- SOIL CLASS = C (Worst Case)
- SEISMIC HAZARD FACTOR (Z) ≤ 0.42
- HORIZONTAL SEISMIC ACCELERATION ≤ 2.2g
- WIND REGIONS: NZ1-4
- WIND EXPOSURE: UP TO 15m ABOVE GROUND

Monkeytoe

EVERYTHING BETTER AUSTRALIA
NEW ZEALAND

0800 668 637 - www.monkeytoe.co.nz | 1800 963 047 - www.monkeytoe.com.au

150kg MEDIUM STACKED CONDENSER MOUNT

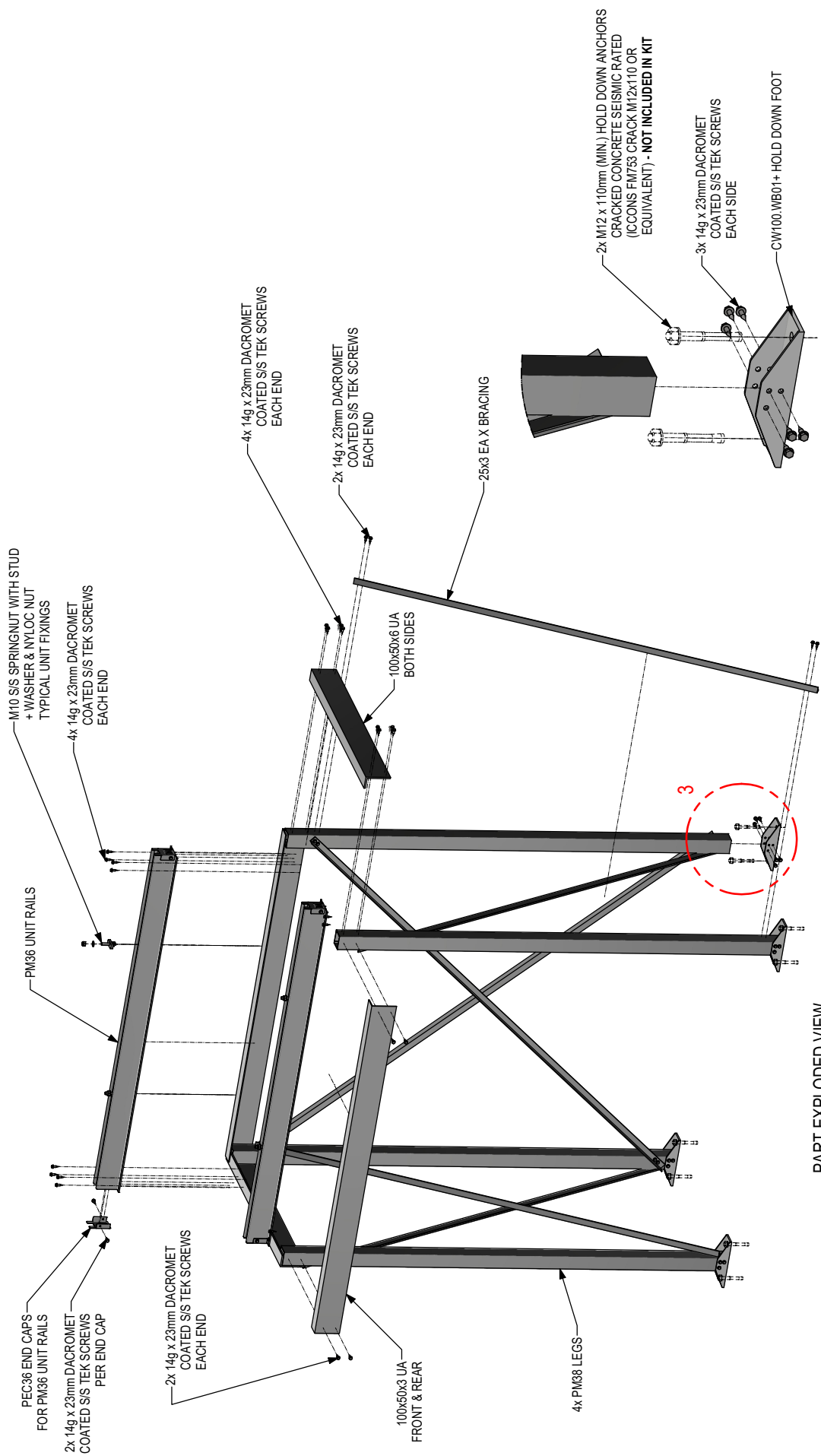
MONKEYTOE GROUP

DWG No: CS025-2-CSS-01 15/04/2024



SHEET 1 OF 2
SCALE: NTS
REV: 1

DO NOT SCALE
DIMENSIONS IN MILLIMETERS



PART EXPLODED VIEW

DETAIL 3
1:5

150kg MEDIUM STACKED CONDENSER MOUNT	
MONKEYTOE GROUP	
DWG No: CS025.2-CSS-01	15/04/2024
	SHEET 2 OF 2
DO NOT SCALE	SCALE: NTS
	REV:1
	DIMENSIONS IN MILLIMETERS

Monkeytoe

EVERYTHING BETTER
AUSTRALIA

NEW ZEALAND | www.monkeytoe.co.nz | 1800 953 047 - www.monkeytoe.com.au

WIND REGIONS NZ1-4 & A0-5:

SPLIT STYLE UNITS:

- MAX. UNBRACED UNIT HEIGHT = 1400mm*
- MAX. BRACED UNIT HEIGHT = 1700mm @ 1100mm WIDE
- MAX. UNIT WIDTH = 1400mm @ 1500mm TALL
- MAX. UNIT WIDTH = 1900mm @ 1350mm TALL

VRF UNITS:

STRAP BRACING REQUIRED FOR ALL VRF UNITS.

- MAX. UNIT HEIGHT = 1850mm*
- MAX. UNIT WIDTH = 1210mm
- MAX. UNIT DEPTH = 1000mm

WIND REGIONS B1 & B2:

SPLIT STYLE UNITS:

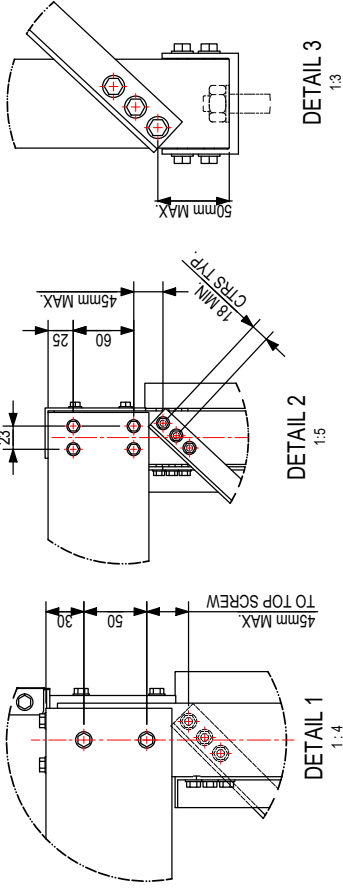
- MAX. UNBRACED UNIT HEIGHT = 1400mm*
- MAX. BRACED UNIT HEIGHT = 1700mm @ 1100mm WIDE
- MAX. UNIT WIDTH = 1400mm @ 1400mm TALL
- MAX. UNIT WIDTH = 1700mm @ 1200mm TALL

VRF UNITS:

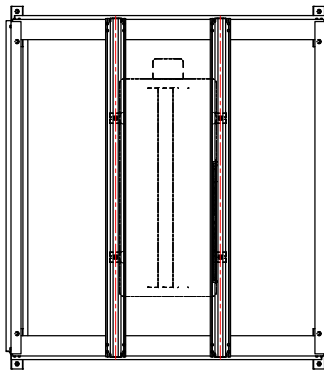
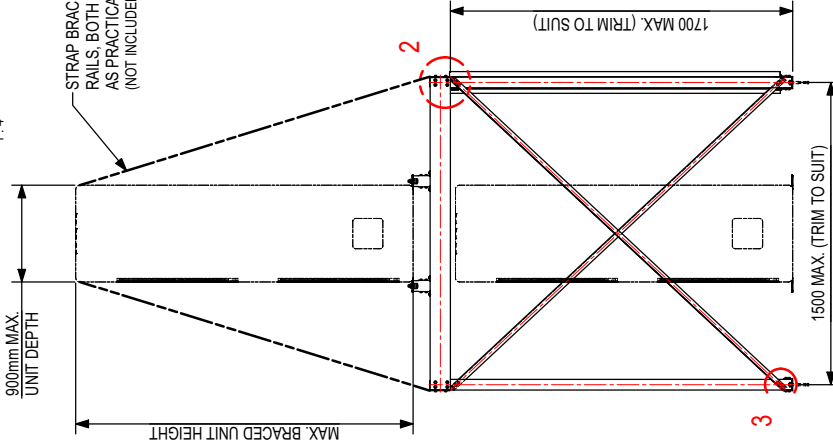
STRAP BRACING REQUIRED FOR ALL VRF UNITS.

- MAX. UNIT HEIGHT = 1850mm*
- MAX. UNIT WIDTH = 1000mm
- MAX. UNIT DEPTH = 1000mm

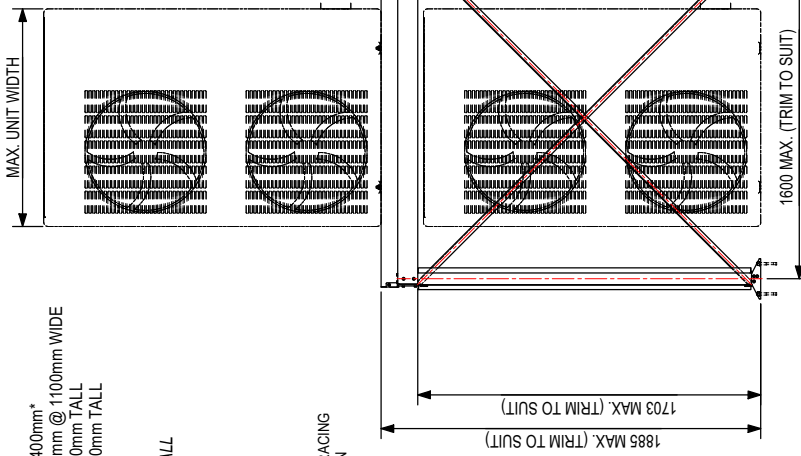
* REFER TO UNIT MANUFACTURERS BRACING REQUIREMENTS FOR UNITS LESS THAN SPECIFIED HEIGHT.



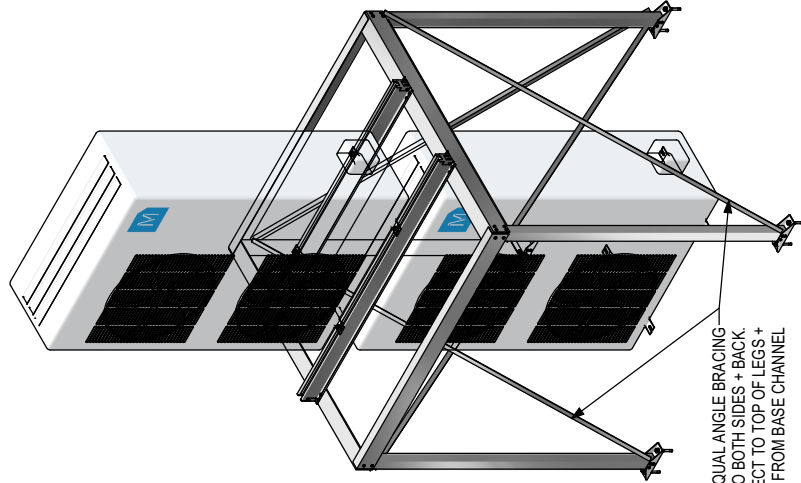
STRAP BRACING FIXED TO RAILS, BOTH SIDES, AS CLOSE AS PRACTICAL TO LEGS. (NOT INCLUDED IN KIT)



PLAN VIEW



FRONT VIEW



25x3mm EQUAL ANGLE BRACING TO BOTH SIDES + BACK. CONNECT TO TOP OF LEGS + 50mm MAX. FROM BASE CHANNEL.

300kg LARGE STACKED CONDENSER MOUNT			
MONKEYTOE GROUP			
DWG No: CS025.3-CSS-01	10/04/2024	A3	
SHEET 1 OF 2		SCALE: NTS	REV: 1
DO NOT SCALE		DIMENSIONS IN MILLIMETERS	

Monkeytoe

EVERYTHING BETTER AUSTRALIA

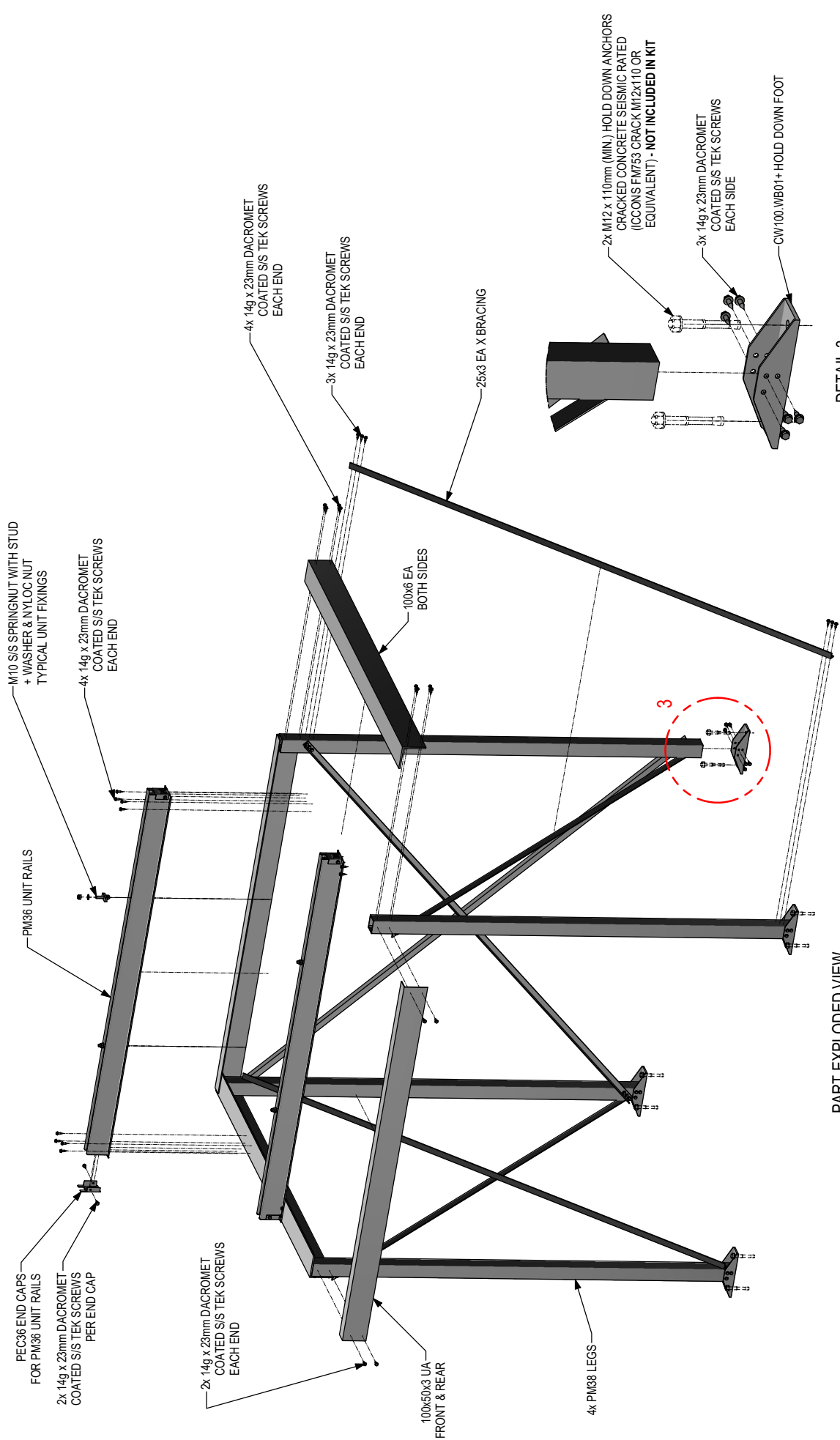
NEW ZEALAND | www.monkeytoe.co.nz | 1800 953 047 - www.monkeytoe.com.au

DESIGN CRITERIA: AUSTRALIA

- IMPORTANCE LEVEL = 2
- SOIL CLASS = C (Worst Case)
- SEISMIC HAZARD FACTOR (Z) ≤ 0.15
- HORIZONTAL SEISMIC ACCELERATION ≤ 0.5g
- WIND REGIONS: A & B
- WIND EXPOSURE: UP TO 15m ABOVE GROUND

DESIGN CRITERIA: NEW ZEALAND

- IMPORTANCE LEVEL = 2
- SOIL CLASS = C (Worst Case)
- SEISMIC HAZARD FACTOR (Z) ≤ 0.42
- HORIZONTAL SEISMIC ACCELERATION ≤ 2.2g
- WIND REGIONS: NZ1-4
- WIND EXPOSURE: UP TO 15m ABOVE GROUND



PART EXPLODED VIEW

DETAIL 3
1:5

300kg LARGE STACKED CONDENSER MOUNT			
MONKEYTOE GROUP			
DWG No: CS025.3-CSS-01	10/04/2024	A3	
SHEET 2 OF 2		SCALE: NTS	REV: 1
DO NOT SCALE		DIMENSIONS IN MILLIMETERS	



EVERYTHING BETTER AUSTRALIA

NEW ZEALAND | www.monkeytoe.co.nz | 1800 953 047 - www.monkeytoe.com.au